

Facility Flow Chart

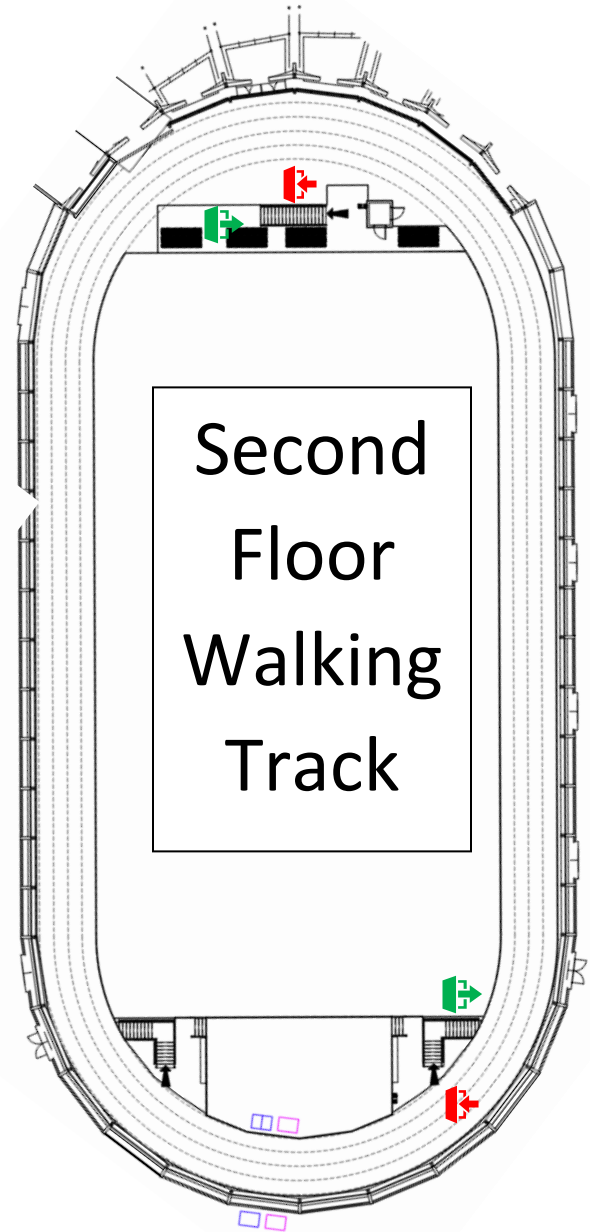
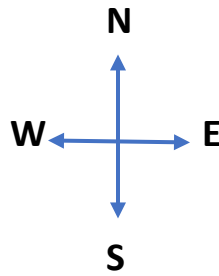
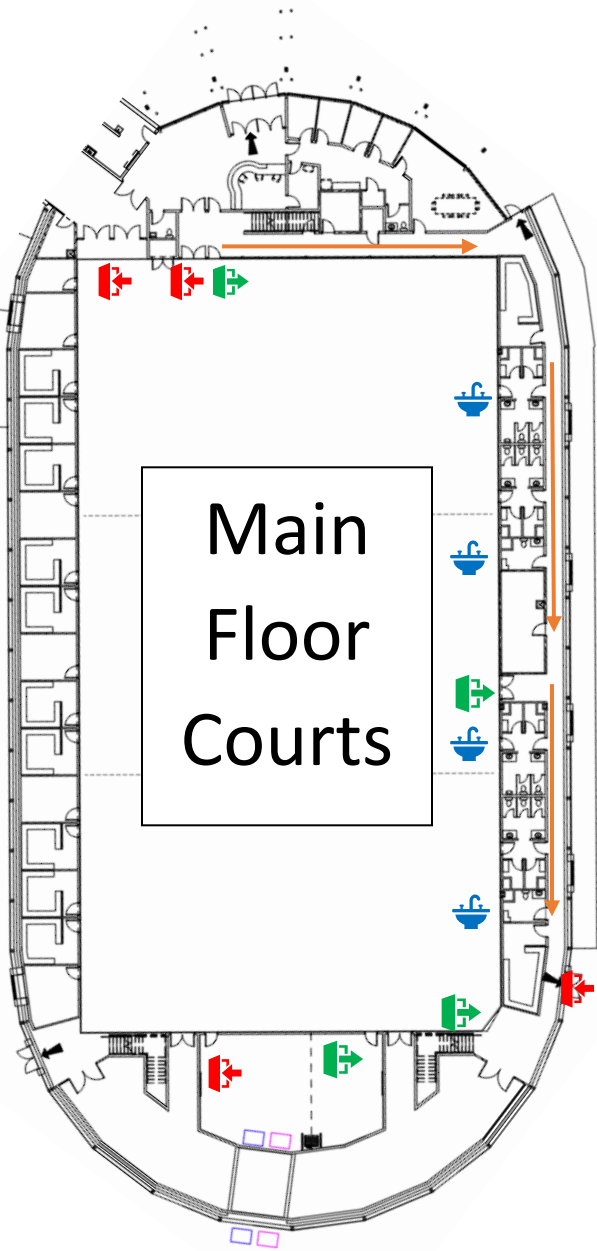
Entering the Facility:

- The hallway on the main floor is for one way traffic only. It is marked with arrows. Please walk south while using the hallway.
- To access the walking track go directly upstairs.
- To access Court #1 go directly into the court.
- To access Court #2 or #3 follow the hallway around and enter the gym on the east side.
- To access the fitness area use the hallway or the walking track.
- To access the multipurpose room use the hallway to get to Court #3 and enter the room.
- Bathroom access is available through the court or the hallway.
- Please take your shoes with you to the designated courts shoe racks.

Exiting the facility:

- From the walking track come down the stairs at the North end and exit into the lobby through the exit doors.
- From Court #1 exit using the doors in the North West corner.
- From Court #2 or #3 exit the gym where you entered and follow the hallway to the south east exit door.
- From the fitness area use the walking track and come down the North stairs. Exit into the lobby using the exit doors.
- From the multipurpose room exit the gym where you entered and follow the hallway to the south east exit door. Please make sure no one else is in the hallway as you make your way towards the door.

Facility Flow Chart



LEGEND



Entrances



Exits



Washrooms



One Way
Traffic